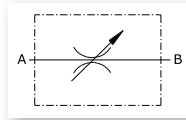


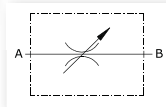
Flow regulator valve, conical type, unidirectional. Body in galvanized steel.
Connections (BSP): inlet F – outlet F.



Art. no.	Connections	Regulation range	Max pressure	Max flow rate
6654	1/2" BSP	from 0 to 50 l/min	350 bar	50 l/min
6655	3/4" BSP	from 0 to 80 l/min	300 bar	80 l/min
6656	1" BSP	from 0 to 110 l/min	250 bar	110 l/min

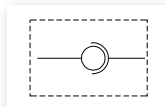
Pipework components

Flow regulator valve, 90° - elbow type, unidirectional. Body in galvanized steel.
Connections (BSP): inlet F – outlet F.



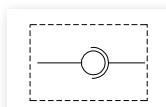
Art. no.	Connections	Regulation range	Max pressure	Max flow rate
6660	1/2" BSP	from 0 to 50 l/min	320 bar	50 l/min
6661	3/4" BSP	from 0 to 80 l/min	300 bar	80 l/min
6662	1" BSP	from 0 to 110 l/min	250 bar	110 l/min

Swivel joint, straight type, with ball valve, self - lubricating. Body in galvanized steel.
Connections (BSP): inlet M – outlet F.



Art. no.	Connections	Max static pressure	Max dynamic pressure	Max flow rate
6690	1/4" BSP	400 bar	300 bar	25 l/min
6691	1/2" BSP	360 bar	220 bar	80 l/min
6692	3/4" BSP	310 bar	200 bar	120 l/min
6693	1" BSP	280 bar	150 bar	150 l/min
6694	1 1/4" BSP	250 bar	150 bar	200 l/min

Swivel joint, 90° - type, with ball valve, self - lubricating. Body in galvanized steel.
Connections (BSP): inlet M – outlet F.



Art. no.	Connections	Max static pressure	Max dynamic pressure	Max flow rate
6695	1/4" BSP	400 bar	300 bar	25 l/min
6696	1/2" BSP	360 bar	220 bar	80 l/min
6697	3/4" BSP	310 bar	200 bar	120 l/min
6698	1" BSP	280 bar	150 bar	150 l/min
6699	1 1/4" BSP	250 bar	150 bar	200 l/min