

Art.no. **9210**



Automatic rewind, spring-driven hose reel, in painted steel, provided for exhaust extraction, with crush proof hose in different diameters and lengths, hose stop bumper and beak nozzle with diaphragm lid.

Art.no.	Suitable for hose diameter	Max hose length
9210/7510	Ø 75 mm	10 m
9210/7515		15 m
9210/10010	Ø 100 mm	10 m
9210/10015		15 m
9210/12510	Ø 125 mm	10 m
9210/125125		12.5 m
9210/15010	Ø 150 mm	10 m

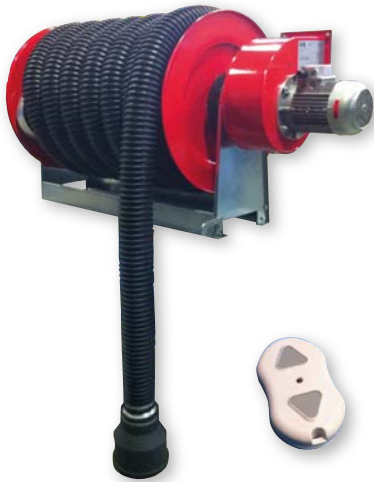
Art.no. **9212**



Automatic rewind, spring-driven hose reel, in painted steel, provided for exhaust extraction, with electric centrifugal fan, crush proof hose in different diameters and lengths, hose stop bumper and beak nozzle with diaphragm lid.

Art.no.	Suitable for hose diameter	Max hose length	Power	Voltage
9212/6010	Ø 60 mm	10 m	0.37 kW	380 VAC - 50 Hz
9212/7510	Ø 75 mm			
9212/7515		15 m		
9212/10010	Ø 100 mm	10 m	0.75 kW	
9212/10015		15 m		
9212/12510	Ø 125 mm	10 m		
9212/125125		12.5 m		
9212/15010	Ø 150 mm	10 m	1.1 kW	

Art.no. **9214**



Miniset with electric centrifugal fan, double crush proof hose in different diameters and lengths, hose stop bumper and beak nozzle with diaphragm lid, provided for exhaust extraction, suitable for the use in 1 or 2 posts.

Art.no.	Suitable for hose diameter	Max hose length	Power	Voltage
9214/7510	Ø 75 mm	10 m	0.75 kW	380 VAC - 50 Hz
9214/7515		15 m		
9214/10010	Ø 100 mm	10 m		
9214/10015		15 m		
9214/12510	Ø 125 mm	10 m		
9214/125125		12.5 m		
9214/15010	Ø 150 mm	10 m	1.1 kW	

Art.no. **9216 - 9218**



Wall-mounted exhaust extraction system for one or two working places. Each unit includes an electric centrifugal fan with backward blade fan rotor, double crush proof hose in different diameters and lengths, hose stop bumper and beak nozzle with diaphragm lid.

Art.no.	Suitable for hose diameter	Max hose length	Power	Voltage
9216/75075	Ø 75 mm	7.5 m	0.75 kW	380 VAC - 50 Hz
9216/7510		10 m		
9216/100075	Ø 100 mm	7.5 m		
9216/10010		10 m		
9218/75075	Ø 75 mm	7.5 m	1.1 kW	
9218/7510		10 m		
9218/100075	Ø 100 mm	7.5 m		
9218/10010		10 m		