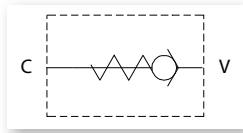
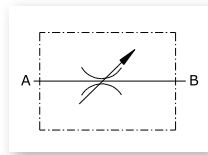


Non-return valve with high pressure gate valve, suitable for lubricants pipeworks. Body in galvanized steel. Opening pressure 0.5 bar (on demand also 4 bar or 8 bar). Connections (BSP): inlet F – outlet F.



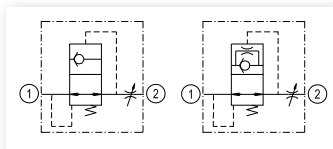
Art. no.	Connections	Max pressure	Max flow rate
6639	1/4" BSP	400 bar	30 l/min
6641	1/2" BSP	350 bar	90 l/min
6643	3/4" BSP	300 bar	130 l/min
6640	1" BSP	280 bar	180 l/min
6648	1 1/4" BSP	260 bar	250 l/min

Pressure reduction valve with high pressure gate valve, suitable for lubricants pipeworks. Body in galvanized steel. Connections (BSP): inlet F – outlet F.

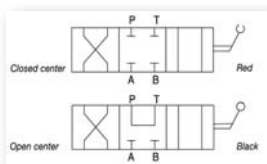


Art. no.	Connections	Regulation range	Max pressure	Max flow rate
6650	1/2" BSP	from 5 to 50 bar	320 bar	45 l/min
6651	3/4" BSP	from 5 to 50 bar	300 bar	85 l/min
6652	1" BSP	from 5 to 50 bar	250 bar	140 l/min

Parachute valve for lubricants pipeworks: blocks automatically the flow of lubricants inside of the pipework in case of leakages caused by failures or cracks of pipe components. Body in galvanized steel.



Art. no.	Connections	Regulation range	Max pressure	Max flow rate
6670	1/2" BSP	from 10 to 70 l/min	350 bar	80 l/min
6671	3/4" BSP	from 30 to 140 l/min	350 bar	150 l/min
6672	1" BSP	from 40 to 170 l/min	350 bar	180 l/min



4-way evacuation valve in cast iron, open center, with limited pressure drops. With 2 fixation holes Ø 8,5 mm. Suitable for the suction and discharge of waste oils and waste antifreeze.

Art. no.	Connections	Max pressure	Max flow rate
6675	1/2" BSP	250 bar	90 l/min
6676	3/4" BSP	160 bar	120 l/min
6677	1" BSP	160 bar	150 l/min

new

new