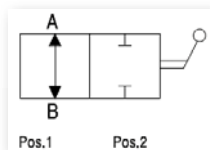
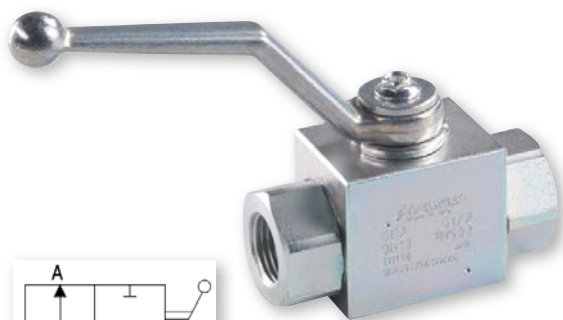


Pressure relief valve, suitable for lubricants pipeworks. Body in aluminium alloy and cartridge in galvanized steel. Includes glycerin manometer with graduation 0 – 60 bar and regulation screw for the selection of the max. applicable pressure. Connections (BSP): inlet F – outlet M.



Art. no.	Connections	Regulation range	Max flow rate	Max pressure
2259	1/2" BSP	from 5 to 50 bar	70 l/min	70 bar
2260	3/4" BSP	from 5 to 50 bar	80 l/min	70 bar
2258	1" BSP	from 5 to 50 bar	90 l/min	70 bar



High pressure ball valve, with full port and lever handle, suitable for lubricants pipeworks. Body in galvanized steel. Connections (BSP): inlet F – outlet F.

Art. no.	Connections	Max flow rate	Max pressure
7244	1/4" BSP	30 l/min	500 bar
7242	3/8" BSP	50 l/min	500 bar
7241	1/2" BSP	80 l/min	500 bar
7240	3/4" BSP	120 l/min	350 bar
7239	1" BSP	160 l/min	350 bar
7238	1 1/4" BSP	160 l/min	280 bar

PATENT PENDING

new



Art.no. **2269**

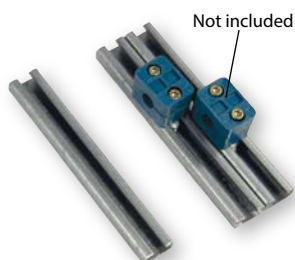
Hydraulic safety screw coupling assembly with 4 gaskets, suitable for the use in hydraulic suction and dispensing lines in combination with pneumatic oil pumps.

Ideal to prevent a potential risk of air suction in suction lines which are used continuously.

Connection threads on coupling and connector 3/4" BSP (F), with enlarged internal circuit permitting an improved oil flow.



Art.no. **9872**



Art.no. **9843**

Not included

Art.no. **9843**

Metal bar 28x30 mm, suitable for the mounting of fixation clamps (F).

Art.no. **9872**

Metal L – bracket, suitable for the fixation overhang of rigid pipes.

