

new



Art.no. **4998/30**

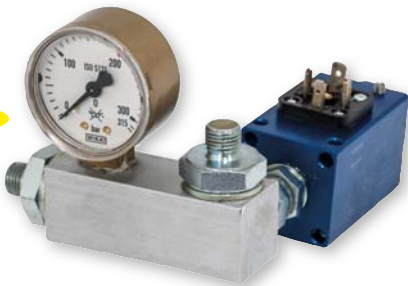
Mobile 230 VAC grease supply kit for 18-25 kg - pails, consisting of:

- Electrical grease pump, art. no. 4092/50;
- Adjustable pressure switch art.no. 4265;
- Metal drum cover, ø 330 – 290 mm; art. no. 4302*;
- 3 m – high pressure hose SAE 100 R2 AT, 1/4" BSP art.no. 4503;
- Trolley with 4 castors with brakes, art.no. 4362;
- Follower plate, ø 310 - 260 mm art. no. 4314*;
- High pressure grease control gun, 300 mm – steel braid outlet hose ø ext. 10 mm and 4 - jaws - hydraulic coupler art.no. 4205;
- High pressure Z – swivel art.no. 4221.

*See accessories on page 36 for pails/drums in different dimensions!

Art. no.	Suitable for pails of	Voltage	Power	Delivery	Max outlet pressure	RPM	Reducers
4998/30	18 - 25 kg	230 VAC - 50 Hz	750 W	400 g/min	200 bar	1400	7.5 : 1

new



Art.no. **4265**

Adjustable pressure switch with plug for a possible connection of an electric safety panel.

Supplied with a glycerine manometer with graduation of 0-300 bar and regulation screw for the selection of required maximum pressure.

This assembly allows to start the pump once the control gun is activated and to stop it again due to the pressure increase in the circuit once the gun is closed and the set pressure has been achieved.

new



Art.no. **4260**

Pressure relief valve.

Body in aluminium alloy and cartridge in galvanized steel.

Supplied with a glycerine manometer with graduation of 0 – 300 bar and regulation screw for the selection of the required maximum pressure.

Connections (BSP): inlet 1/2" (F) – outlet 1/2" (M).

new



Art.no. **7370**

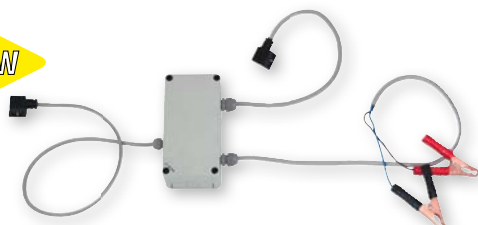
Electric safety panel, with plastic case, for 230 VAC - pumps, consisting of:

- Main ON/OFF - switch;
- Emergency switch;
- White light signal for electric circuit control;
- Green light signal for function control;
- Red light signal indicating a function stop due to overheating;
- Plug in accordance with the standard IEC 309.

Art.no. **7377**

Electric safety panel such as art.no. 7370, but with metal case, suitable for the use with 400 VAC pumps.

new



Art.no. **7378**

Electric safety panel for the use with 12 VDC pump models, including connecting cable with crocodile clamps for battery connection and electric cable with plug for a possible connection to the adjustable pressure switch, art.no. 4265.

This assembly allows to start the pump once the control gun is activated and to stop it again due to the pressure increase in the circuit once the gun is closed and the set pressure has been achieved.